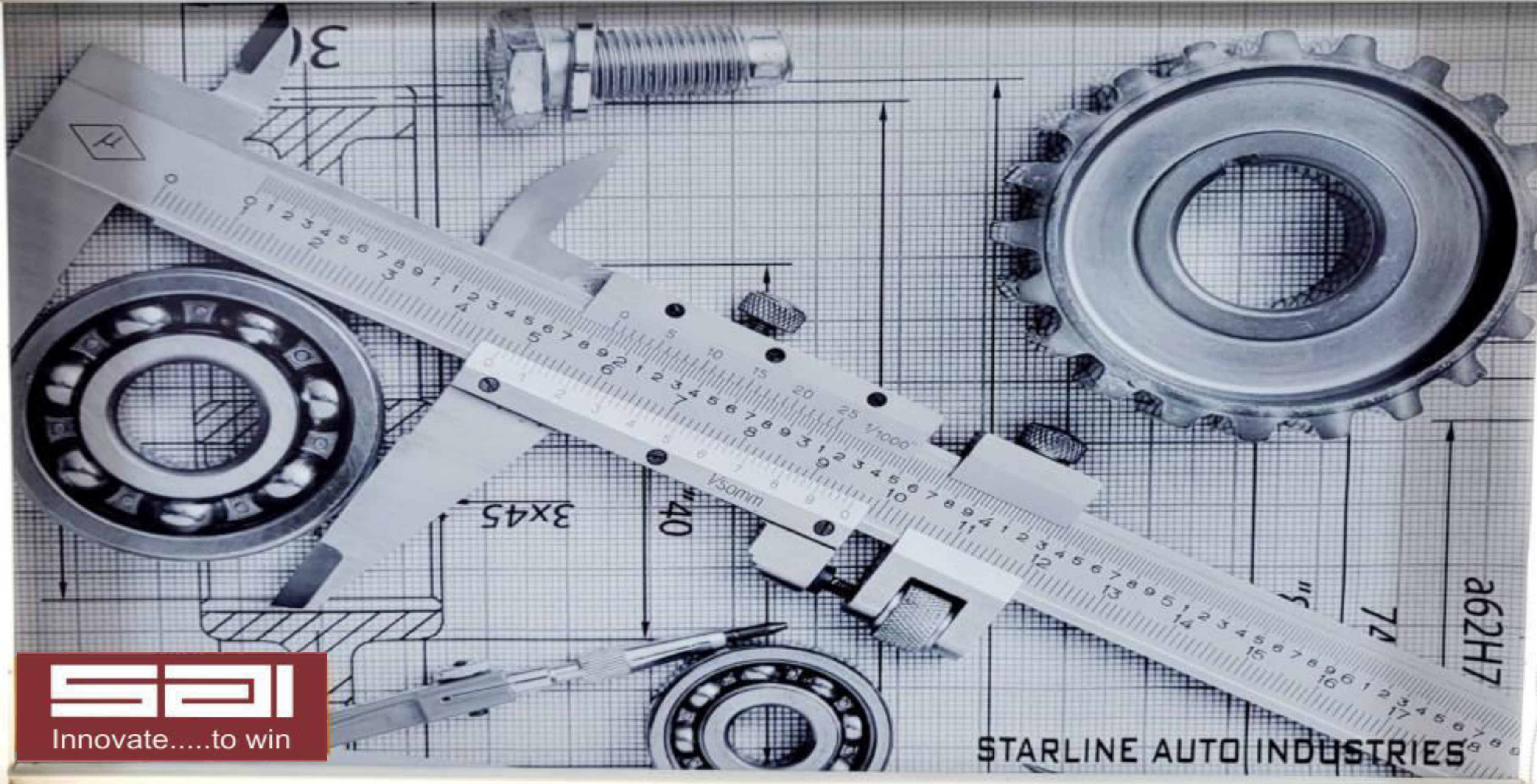


# COMPANY PROFILE



Innovate.....to win

STARLINE AUTO INDUSTRIES



Innovate.....to win

# STARLINE AUTO INDUSTRIES



- Factory Space of **14,000 Sq Ft** from 7K Sq Ft
- **400 tons** increased Production Capacity from 30 tons include hydraulic press 200T
- In-house **design and development** facility for tools manufacturing
- Qualified and trained team of employees and workers
- In-house **tool room** for tool maintenance.
- **IATF & ISO CERTIFIED**
- Continuing the legacy of making **durable and accurate** dies from last **15 years**

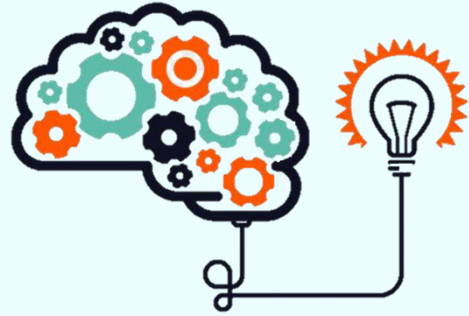
## SAI ENGINEERS

(chakan)

## About Starline Auto Ind. MD's Desk



- A passionate B.COM **Ramprakash YADAV**
- B.COM in 1995 from University of Pune
- Joined his Father's sheet metal trading business and Rebuilt it as a product manufacturing company
- **Manufactured Press Tools** during early days
- Have 30 years experience in Sheet metal Engineering
- **Awarded by "Indian Achievers Award For Industrial Development"**
- Employee personals with 100+ years collaborative experience in sheet metal industry
- Futuristic Mr. Yadav endeavors to introduce newest technology to competitive market like, Perforation sheet, welding, etc. to fulfil Automobile needs.
- Starline auto ind. Manufacturing of precision sheet metal press parts, Perforation, Fabrication and welded sub-assemblies also IATF 16949-2016 & ISO 9001-2015 CERTIFIED ORGANIZATION.



## **VISION**

**To be the preferred and most trusted resource in sheet metal precision fabrication Industries**



## **MISSION**

**To find the easiest and most economical way of Sheet metal processing to fulfill the customers requirement in terms of Quality, Delivery, Cost and Lowest lead time in development, to become most preferred company in Sheet Metal industry in India and in the World**

# GOALS



## CUSTOMER SATISFACTION

To provide customer satisfaction through responsiveness, quality performance and meeting customer expectations



## COMPETITIVENESS

To provide fair competitive pricing to our customers while maintaining our commitment to our employees



## RELATIONSHIPS

To seek out and build long term relationships with customers and vendors, who are willing to be our business partners



## RESPONSIBILITY

To take an opportunity be accountable for every interaction from us with our Customers, Vendors and Employees to create a crystal clear understanding



## **STARLINE AUTO INDUSTRIES**

### **ENVIRONMENT POLICY**

We at **STARLINE AUTO INDUSTRIES**, commit ourselves to manufacture & supply of sheet metal components and pledge to reduce damage to environment both natural & human by-

- **Maintaining a clean & neat work environment**
- **Minimizing waste generation by effective management of resources.**
- **Avoiding direct contact with chemicals for safety by employing fully enclosed, deliberate operating procedures.**
- **By educating employees regarding environmental management.**

We shall strive to continually improve our environmental standards by proactively preventing pollution. We shall comply with all applicable legal and other requirements relating to environmental aspects. The necessary framework for setting and reviewing environmental objectives and targets, empowering employees to implement maintain and document the same, has been established.

This policy has been communicated to all persons working for or on behalf of the organization and is available to the public.

**Managing Partner**

**Mr. Ramprakash Yadav**

**Date :01.02.2018**

## AWARDS

### SULZER -BEST SUPPLIER AWARD



The year 2020-21 , On the occasion of vendor meet,



### ALL INDIAN ACHIEVERS FOUNDATION AWARD FOR INDUSTRIAL DEVELOPMENT

The year 2010, a annual national award  
from the National Agency



### TATA FICOSA-BEST DEVELOPMENT AWARD

On the occasion of vendor meet in  
2012







Innovate.....to win

# Starline Functional Organization

**MD**

**Mr. Ramprakash Yadav**

**Plant Head / Business Development**

**Mr. Shubham Yadav**

**HR & Admin**

**Mrs. Vandana Badhe**

**Accounts**

**Mrs. Gayatri Neman**

**Sales Assistant**

**Mrs. Mayuri Raut**

**QA Head & QMSR**

**Mr. Basavaraj Modi**

**Production Head / PPC**

**Mr. Vaibhav Waykole**

**Core Shop Incharge**

**Mr. Mahadev Narawade**

**Design / NPD**

**Mr. Sandip Pawar**

**Tool Room**

**Ms. D Barge**

**Machine Maintenance**

**Mr. Vaibhav Waykole**

**Assembly Shop Incharge**

**Mr. Himanshu Patil**

**Store / Dispatch Incharge**

**Mr. Satish Kokate**

**QC Engineer**

**Mr. Akash**

**QC Engineer**

**Mr. Vaccant**

**Press Shop Supervisor**

**Mr Kadam**

**Assembly Shop Supervisor**

**Mr. Omprakash K**

**Store Assistant**

**Mr Shekhar Pingale**

**Prepared By :**

**Mr. Basavaraj Modi**

**Approved By :**

**Mr. Ramprakash Yadav**

# Core Industries WE ARE SERVING TO



**AUTOMOBILE**



**INDUSTRIAL  
EQUIPMENT**



**MEDICAL PRODUCT**



**HOME APPLIANCES**



**AGRICULTURAL**



**INDUSTRIAL  
STORAGE**

# Capabilities



## ENGINEERING

All design and machine software are with license copy of Star;line Auto Industries. ownership



**AUTOCAD**  
TRUESHAPE NESTING  
FOR 2D DESIGN



**AutoDesk Inventor**  
for 3D die design



**Catia**  
for Die Design



Innovate.....to win

# STARLINE AUTO INDUSTRIES



## Press Line (Main Production Line)



# CNC & VMC Line



## War Room & Office



# Raw Material area and Shearing





# Projection, Spot Welding area & Drilling area



## Tool Room for Tool Maintenance



# Fork Lift And Store carrying capacity



Fork Lift for Die Loading-Unloading



Stores

# New facilities

Office - Meeting rooms, Conference room, Training area, Staff and Management seat out





<b>STARLINE AUTO INDUSTRIES</b>		<b>QTY (NOS)</b>	<b>LIST OF PRODUCTION MACHINES</b>	
<b>SR. NO.</b>	<b>MACHINE DESCRIPTION</b>	<b>01</b>	<b>MAKE</b>	<b>CAPACITY/SPECIFICATI ONS</b>
<b>1</b>	<b>350T Press</b>	<b>01</b>	<b>Premier</b>	<b>350 T</b>
<b>2</b>	<b>300T Press</b>	<b>01</b>	<b>SEW</b>	<b>300 T</b>
<b>3</b>	<b>200T Hyd Press</b>	<b>01</b>	<b>Fluid Power</b>	<b>200 T</b>
<b>4</b>	<b>150T Press</b>	<b>01</b>	<b>Gill</b>	<b>150 T</b>
<b>5</b>	<b>110T Press</b>	<b>01</b>	<b>SEW</b>	<b>110 T</b>
<b>6</b>	<b>100T Press</b>	<b>01</b>	<b>Mankoo</b>	<b>100 T</b>
<b>7</b>	<b>63 T Press</b>	<b>01</b>	<b>SEW</b>	<b>63 T</b>
<b>8</b>	<b>45 T Press</b>	<b>01</b>	<b>SEW</b>	<b>45 T</b>
<b>9</b>	<b>50T Press</b>	<b>06</b>	<b>Gill</b>	<b>50 T</b>
<b>10</b>	<b>30T Press</b>	<b>02</b>	<b>Gill</b>	<b>30 T</b>
<b>11</b>	<b>20T Press</b>	<b>02</b>	<b>Gill</b>	<b>20 T</b>
<b>12</b>	<b>CNC Lathe (Chuck Dia 200 MM Between Center 350 MM)</b>	<b>02</b>	<b>Jyoti</b>	<b>200 MM</b>



Innovate....to win

**STARLINE AUTO INDUSTRIES**

**LIST OF PRODUCTION MACHINES**

**MFG SET-UP & TOTAL CAPACITY MATRIX**

<b>SR. NO.</b>	<b>Make</b>	<b>Specifications</b>	<b>Capacity booked for existing Business</b>	<b>Capacity available in New Business</b>
<b>1</b>	<b>Premier</b>	<b>350 T</b>	<b>12 HRS</b>	<b>12 HRS</b>
<b>2</b>	<b>SEW</b>	<b>300 T</b>	<b>12 HRS</b>	<b>12 HRS</b>
<b>3</b>	<b>Fluid Power</b>	<b>200 T</b>	<b>12 HRS</b>	<b>12 HRS</b>
<b>4</b>	<b>Gill</b>	<b>150 T</b>	<b>12 HRS</b>	<b>12 HRS</b>
<b>5</b>	<b>SEW</b>	<b>110 T</b>	<b>12 HRS</b>	<b>12 HRS</b>
<b>6</b>	<b>Mankoo</b>	<b>100 T</b>	<b>12 HRS</b>	<b>12 HRS</b>
<b>7</b>	<b>SEW</b>	<b>63 T</b>	<b>12 HRS</b>	<b>12 HRS</b>
<b>8</b>	<b>SEW</b>	<b>45 T</b>	<b>12 HRS</b>	<b>12 HRS</b>
<b>9</b>	<b>Gill</b>	<b>50 T</b>	<b>12 HRS</b>	<b>12 HRS</b>
<b>10</b>	<b>Gill</b>	<b>30 T</b>	<b>12 HRS</b>	<b>12 HRS</b>
<b>11</b>	<b>Gill</b>	<b>20 T</b>	<b>12 HRS</b>	<b>12 HRS</b>
<b>12</b>	<b>LMW (CNC)</b>	<b>200 MM</b>	<b>12 HRS</b>	<b>12 HRS</b>
<b>13</b>	<b>HARTEFORT (VMC)</b>	<b>1050 X 600 X 600</b>	<b>12 HRS</b>	<b>12 HRS</b>

# Tools Manufacturing and Maintenance facilities



## In House Tool Maintenance Facility

Machine Name	Make	Specification
Lath Machine	Sagar	7 ft
Drill Machine	HP	450*600 Bed size
Radial Drill Machine	GP	1.5 inch
M1TR	Foster	3 ft * 1ft
Milling Machine 02 no's	HMT	700X350
VMC	HARTFORT	1050 X 600 X 600 MM

## Tool MFG Sister Companies and Vendors (Bhosari)

	Raw Material	Pre machining	Hardening	Wire Cutting	Assembly
<b>From 16-18 Years</b>	Kirti Alloy	Vijaya	Darekar	Sankalp	In House
<b>From 3-10 Years</b>	Raviraj	Gurukrupa	Shital Vaccume	Spark Solution	

# Welding & Other Facilities



## In house Welding Facility

Sr No	Machine Name	Specification
1	CO2 WELDING	300 AMP
2	ORGAN WELDING	300 AMP
3	SPOTING MACHINE SPM	100KVA
4	ARC WELDING	100 KVA
5	PROJECTION Welding	20 KVA
6	Spot Welding - 4	30 KVA
7	EOT Crane	10 Ton
8	Spot Welding -2	50 KVA

## Other In house Facility

Sr No	Machine Name	Specification
1	Lath Machine	7 ft
2	Lath Machine	4 ft
3	Surface Grinding	450*300 Bed size
4	Drill Machine 2	450* 600
5	Raid ail Drill Machine	1.5 Inch
6	Fork Lift	3 Tons
7	M1TR	3 * 1 FT
8	Milling Machine	1200*400
9	Air Compressor	95 CFM
10	Air Compressor	84 CFM
11	Genset	125 KVA
	Ultra High Capacity	



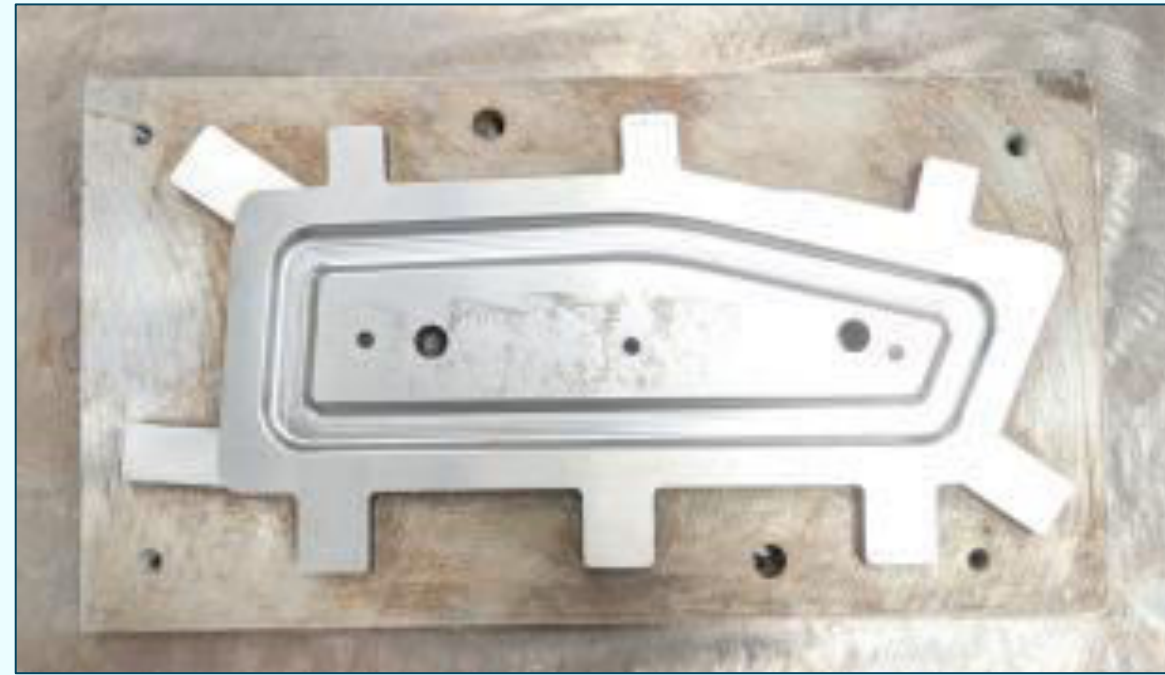


Innovate.....to win

# Products Gallery

## Press Components

# Dies made by Us for AITTR Wire Mesh Parts

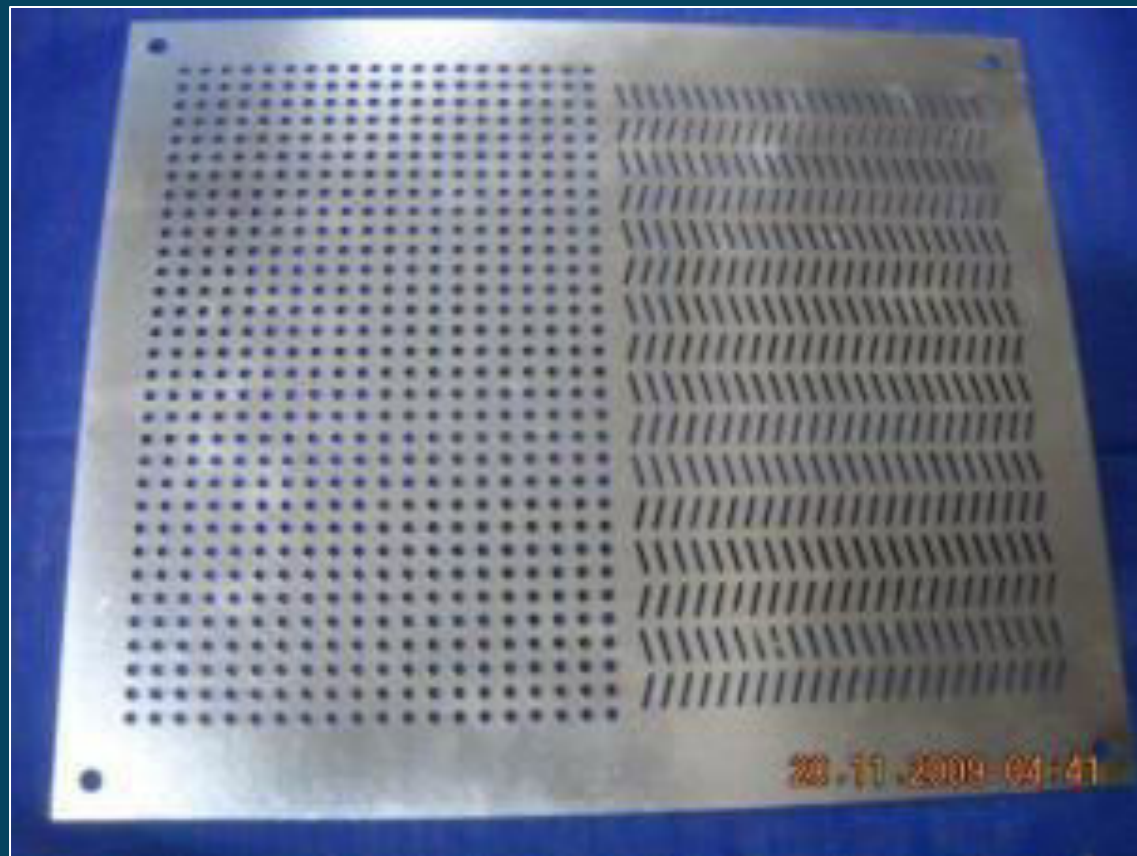


Wire Mesh Blanking and Forming Die

# Products Gallery



## Other Wire Mesh Parts



# Parking Break Levers (Hand Break) made for Automobile



Model	Tool Life Consumed in Lakhs and Still Running
Nissan	7
Ford	5
Indigo	5
Indica	5
Nexon	2.5



Innovate.....to win

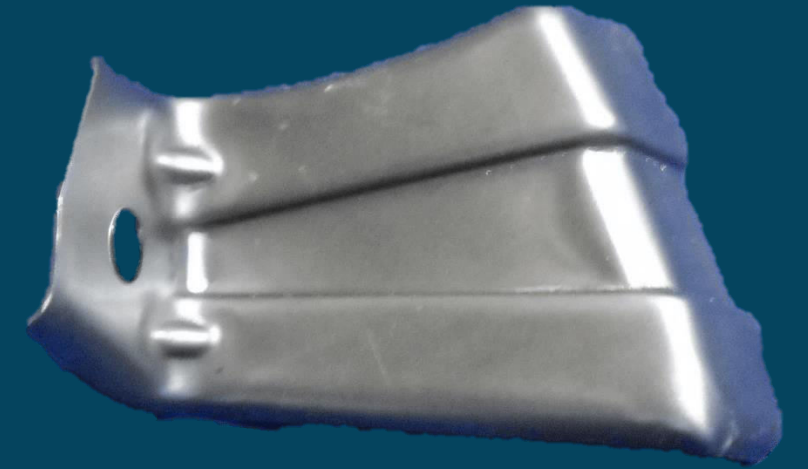
## NEW Break Lever for VW

We have developed new tooling for VW for their upcoming car. We'll start production by Feb 2021.

It took an engineering excellence and persistence to make the tools as the material properties were critical



# Products Gallery



# Products Gallery



# Products Gallery

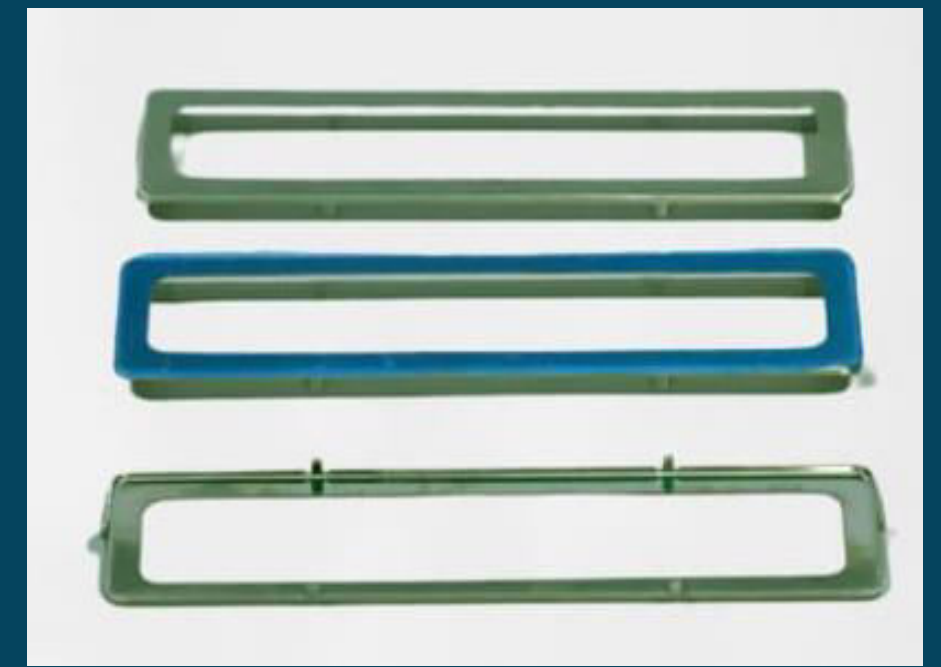
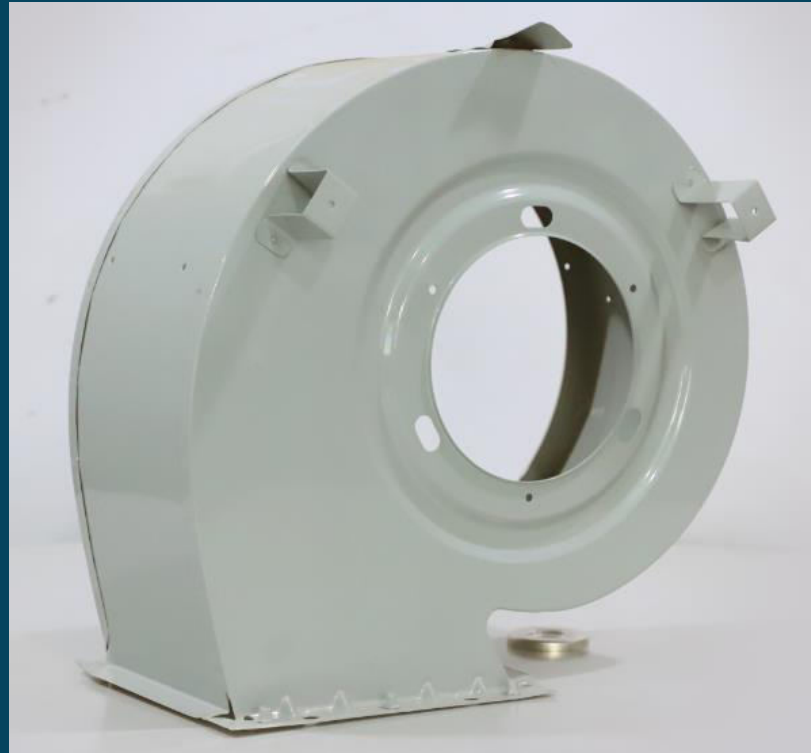




# Products Gallery



# Products Gallery





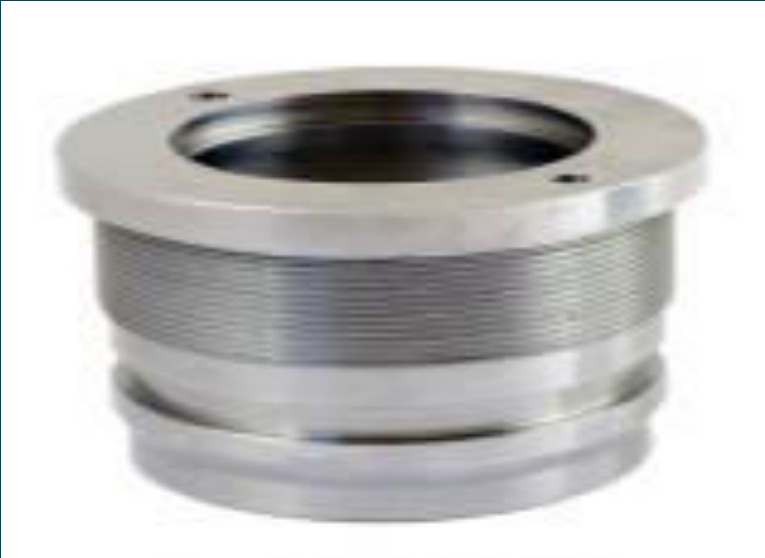
Innovate....to win

# Products Gallery

## Machined Components



# Products Gallery



# Products Gallery



# Customers Served By Group



Current Customers :



Previously worked with :



**SAL**

Innovate.....to win

## Contact Information

For RFQs, Questions, Suggestions, and more

### MAILING ADDRESS

ADDRESS- J - 518, MIDC, BHOSARI, PUNE,  
MAHARASHTRA- 411026, INDIA

### CONTACT DETAILS

Ramprakash Yadav (MD)

[md@starlineautoind.co](mailto:md@starlineautoind.co)

M : +91 9860090242

Shubham Yadav (Business Head)

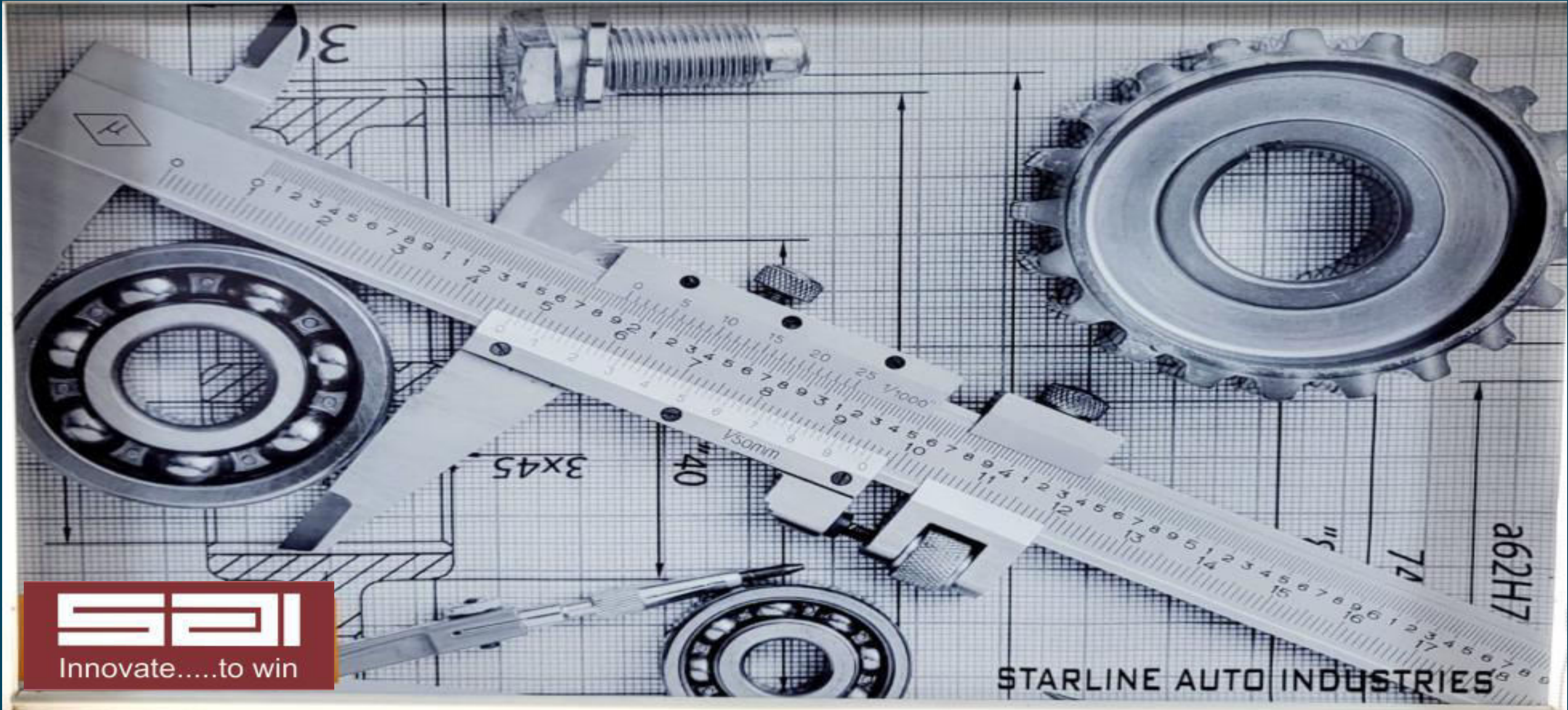
[starlineautoind@gmail.com](mailto:starlineautoind@gmail.com)

M + 91 7709898810





# THANK YOU!



**S&I**

Innovate.....to win

STARLINE AUTO INDUSTRIES